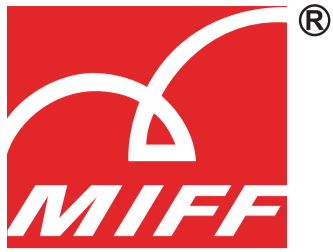


MALAYSIAN INTERNATIONAL



FURNITURE FAIR 2025



furnis now

The Official Show News of the Malaysian International Furniture Fair

Issue 4 March



1-3 March 9:30am - 6.00pm | 4 March 9:30am - 5.00pm



MITEC & WTCKL, Malaysia



AWARDS CEREMONY

MIFF 2025 Best Presentation Award
MIFF 2025 Furniture Excellence Award
MIFF Furniture Design Competition 2025



MIFF AWARDS CEREMONY

3 MARCH 2025 | Malaysia International Trade and Exhibition Centre

MIFF 2025 Best Presentation Award
MIFF 2025 Furniture Excellence Award
MIFF Furniture Design Competition 2025



Crafting Dreams

A Spotlight on Design Excellence

Honouring Innovation and Craftsmanship Across the Furniture Industry

The Malaysia International Trade and Exhibition Centre (MITEC) buzzed with excitement on March 3rd as the MIFF 2025 Awards Ceremony celebrated exceptional achievements in furniture design. The atmosphere was alive with chatter and laughter, uniting a diverse crowd of furniture enthusiasts, designers, and innovators from all around the world, to honour creativity and craftsmanship.

The event was graced by YBhg Dato' Razali Bin Mohammad, Deputy Secretary-General of the Ministry of Plantation and Commodities, who represented YBhg Dato' Yusran Shah, Secretary-General of the Ministry, adding prestige to the festivities.

"For over three decades, MIFF has been more than just a furniture exhibition - it has served as a cradle of innovation and a demonstration of creativity," remarked YBhg Dato' Razali in his keynote address. His words resonated with the audience, setting the tone for an afternoon dedicated to pushing boundaries in furniture design.

This year, the MIFF Furniture Design Competition (MIFF FDC) celebrated its 15th edition with the theme "The Fashion Inspired Furniture." An impressive 335 entries from 30 design institutions and private firms flooded in, challenging designers to reimagine furniture through the lens of fashion. The results? Bold, stylish, and functional pieces that showcased the participants' imaginations.

Chief Judge Dr. Eric Leong praised the creations: "This year's entries demonstrated remarkable innovation and craftsmanship. Participants showcased exceptional skill in translating fashion concepts into functional furniture pieces."

The spotlight shone on Wong Lilee from Universiti Sains Malaysia (USM), who clinched the champion title with her stunning "Leviosa Chair." This masterpiece redefined rattan craftsmanship through contemporary fashion, boasting fluid curves and an airy design that evokes a sense of weightlessness.

Second place went to Ong Jing Rou from Asia Pacific University of Technology & Innovation (APU) for her innovative "Loome" cabinet, allowing users to reconfigure storage based on seasonal needs. Third place was awarded to Putera Muhammad Afiq Bin Maizurin from Universiti Teknologi MARA (UiTM) for the "Monroe Breeze Chair," beautifully capturing the essence of Marilyn Monroe's iconic flowing dress.

The competition also honoured Ts Dr. Siti Suhaily Binti Surip from USM with the Best Mentor Award, while APU was named Best Institution, underscoring the vital role of education in nurturing future design talent.

The Furniture Excellence Award (FEA) celebrated the industry's top innovators. The coveted Platinum Award went to Inspiwood Furniture for a groundbreaking design that seamlessly fused technology with traditional woodworking techniques. The Gold and Silver Awards were claimed by Yun Ming Wood Industries and Sundesk Venture for their avant-garde aesthetics and cutting-edge functionality.

Chief Judge Zilahe Imre shared insights on the judging process, stating, "The judging process was filled with positive vibes," and noted the continuous improvement in the quality of entries. He encouraged exhibitors to invest in design and branding to meet evolving consumer demands.

The Best Presentation Award (BPA) recognised exhibitors who transformed their booths into immersive experiences. Chuanheng Furniture Products took home the top prize, while Zhejiang Runda Kehong Furniture and Taizhou Framer Office Furniture secured second and third places.

Chief Judge Roberta Mutti emphasised that exhibitors are beginning to understand the importance of their booths as a means of communication, not just a space to showcase products.

As the event wrapped up, the energy in The Gallery was palpable, with attendees buzzing about the innovative designs that will shape the future of the furniture industry. Here's to another year of creativity and celebration at MIFF!

MIFF AWARDS CEREMONY

3 MARCH 2025 | Malaysia International Trade and Exhibition Centre

MIFF 2025 Best Presentation Award
MIFF 2025 Furniture Excellence Award
MIFF Furniture Design Competition 2025



GET MORE AT MIFF 2025 WITH MIFF FURNIVERSE 2.0

Enhanced, Faster, Smarter!



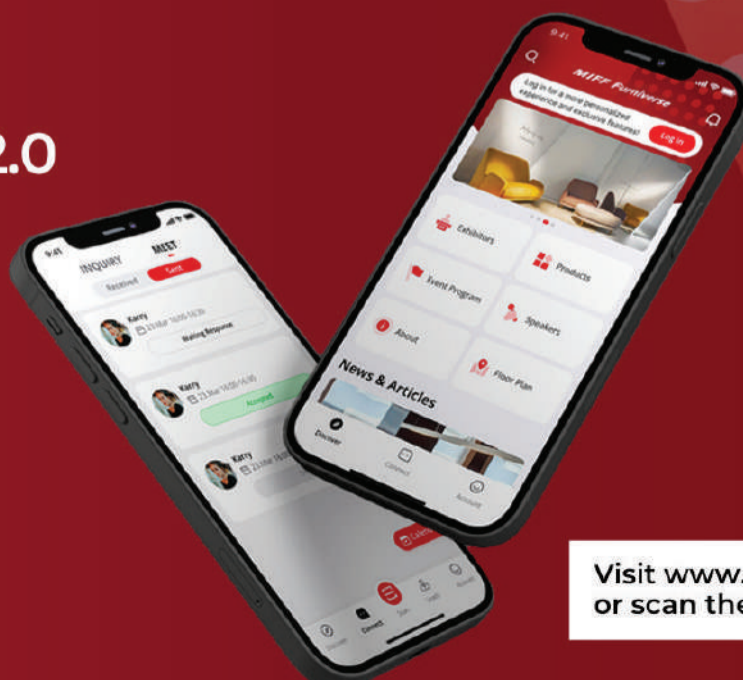
Explore the full event directory of exhibitors, speakers, and products



Find your way seamlessly using the interactive floor plan



Register for informative talk sessions, gaining access to valuable industry insights



Visit www.miffurniverse.com or scan the QR code



Insights from MIFF 2025 Industry Seminar Series

TRANSFORMATIVE TRENDS: AI AND SUSTAINABILITY IN FURNITURE DESIGN

The recent MIFF 2025 Industry Seminar served up some fresh insights on two game-changing forces shaking up the industry: artificial intelligence (AI) and sustainability. Imagine a world where cutting-edge tech meets eco-friendly practices—sounds exciting, right? Industry experts gathered to share their thoughts on how AI can be both a trusty sidekick and a potential disruptor, all while emphasising the importance of research and certification in keeping our furniture game strong on the global stage. Let's dive into the highlights!

AI – FRIEND OR ENEMY?

In a lively discussion titled *"AI – Friend or Enemy?"*, Dr. Eric Leong moderated a panel featuring a diverse group of experts from Malaysia, Thailand, Japan, and China. The conversation kicked off with a bang as they tackled the big question: is AI an ally or a foe in the design world?

Philip Yap from CDN-Worldwide praised AI for its knack for efficiency in generating designs but warned that it shouldn't overshadow human creativity. Shinichi Mitsuki from Mitsui Designtec chimed in, showcasing how AI can speed up the design process. But hold on! Tul Lekutai from Deco-Moda Studio reminded us that while AI can assist, human touch is irreplaceable. Walter Tan from Elemental Republic pointed out AI's lack of emotional storytelling, a sentiment echoed by Hamidah Abdullah from CTCS Worldwide, who expressed concerns about AI diminishing personal connections at work.

Ultimately, the panel agreed that AI is a powerful tool that needs to be used wisely, advising against relying too heavily on it, as it can never replace the unique spark that human designers bring to the table.



SETTING GLOBAL STANDARDS THROUGH RESEARCH AND CERTIFICATION

Next up was Dr. Sharmiza Adnan from the Forest Research Institute Malaysia (FRIM), who took us through *"Ensuring Global Market Readiness: FRIM's Role in R&D, Testing and Certification for Malaysian Furniture Industry."* She painted a vivid picture of how FRIM is paving the way for Malaysian furniture to shine on the global stage. With new regulations like the European Union Deforestation Regulation looming, Dr. Sharmiza highlighted the importance of compliance. FRIM's role includes rigorous testing and certification, ensuring that Malaysian products not only meet but exceed international standards.

Dr. Sharmiza also shared exciting insights into FRIM's research capabilities, showcasing innovations that guarantee sustainability in materials. From durability assessments to industry collaborations, her presentation was a rallying cry for manufacturers to embrace these changes. With plans for new technologies and methodologies, FRIM is gearing up to support the industry like never before. It's clear: the future looks bright for Malaysian furniture, thanks to a proactive approach to research and certification that sets the stage for global success.



“

TESTIMONIALS



Exhibitor

Kenny Wong
 Winner Office Network
 Malaysia

The response has been excellent. Some buyers placed orders immediately, and for the future, I believe this is a very good platform for us. It is also an excellent platform to grow our export business.

Buyer

Uttam Tripathi
 Pacific Foam
 Papua New Guinea

The exhibitors here are really great and they come from all over the world. The quality and service they provide are really great too. We need to find new models, designs, and products for our market, and that's what brings us back.

”

MIFF 2025 FURNITURE EXCELLENCE AWARD
 卓越家具大奖



PLATINUM AWARD

Inspiwood Furniture



GOLD AWARD

Yun Ming Wood Industries



SILVER AWARD

Sundesk Venture

Platinum Award

RM8,000 (cash rebate voucher) + Trophy + Certificate + 1 furniture test at FRIM

Gold Award

RM5,000 (cash rebate voucher) + Trophy + Certificate + 1 furniture test at FRIM

Silver Award

RM3,000 (cash rebate voucher) + Trophy + Certificate + 1 furniture test at FRIM

Judges' Commendation Award

RM4,000 (cash rebate voucher) + Trophy + Certificate



JUDGES' COMMENDATION AWARD (HOUSEHOLD)

Sin Lian Lee Manufacturing



JUDGES' COMMENDATION AWARD (OFFICE)

Guangdong BSUC Smart Home

MIFF 2025 BEST PRESENTATION AWARD
 最佳展位呈现大奖



FIRST PRIZE

RM8,000 (cash rebate voucher) + Trophy + Certificate



SECOND PRIZE

RM6,000 (cash rebate voucher) + Trophy + Certificate



THIRD PRIZE

RM4,000 (cash rebate voucher) + Trophy + Certificate



MERIT AWARD

Certificate



INFORMA BETTER STANDS

Certificate



1st Prize
Chuanheng Furniture Products



2nd Prize
Zhejiang Runda Kehong Furniture



3rd Prize
Taizhou Framer Office Furniture



Merit Award
COMFY NEST INTERNATIONAL



Merit Award
LUXURY SLEEP



Merit Award
RITZ PANEL INDUSTRIES



Merit Award
SIMEWOOD PRODUCT



Merit Award
VS IDEA FURNITURE



Merit Award
SWEET HOME CONCEPT



Merit Award
TMH FURNITURE INDUSTRIES



Informa Better Stands
JOHANN & JOANN CONCEPT

1st Prize



WONG LILIE
 (UNIVERSITI SAINS MALAYSIA)
LEVIOSA CHAIR

2nd Prize



ONG JING ROU
 (ASIA PACIFIC UNIVERSITY)
LOOME

3rd Prize



PUTERA MUHAMMAD AFIQ
 (UITM)
THE MONROE BREEZE CHAIR

Best Institution Award



ASIA PACIFIC UNIVERSITY OF TECHNOLOGY & INNOVATION

Best Mentor Award



TS DR. SITI SUHAILY BINTI SURIP
 (Universiti Sains Malaysia)





WAYFAIR
 MITEC | HALL 3 | Booth M315A
www.wayfair.com

WAYFAIR-LEADING HOME GOODS E-COMMERCE PLATFORM IN NORTH AMERICA

Join Wayfair, the leading home goods and furniture e-commerce platform in North America! With 22M+ active customers, an 80% repeat purchase rate, and an easy-to-operate model, we help suppliers expand globally. Showcase your products to millions, enjoy no hidden fees and hassle-free logistics, and benefit from our marketing support. Don't miss this opportunity! Connect with us at MIFF 2025 and start your cross-border business journey today!



IKAGU FURNITURE
 MITEC | HALL 4 | Booth M412A & M412B
www.ikagufurniture.com.my

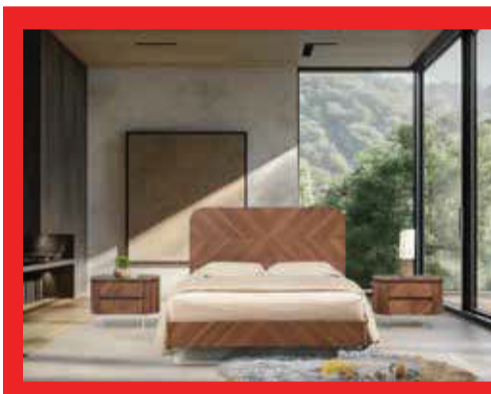
ECLIPSE SERIES PRODUCTS

The Eclipse Series is a modern and elegant furniture collection featuring a sleek black finish accented by light wood tones and textured panel details. Its minimalist design, curved edges, and slim, tapered legs create a sophisticated yet inviting ambiance for any living space. The series includes coffee tables, TV cabinets, shoe cabinets, drawer chests, and multipurpose storage units, all designed to seamlessly blend style and functionality.

SIN LIAN LEE MANUFACTURING
 MITEC | HALL 4 | Booth M407
www.lanouva.com

NERISA 1199

The Nerisa Lounge is a stunning L-shaped sectional sofa that blends modern elegance with ultimate comfort. Upholstered in premium caramel-toned leather, it features plush cushioning, high backrests, and padded armrests for superior support. An electric recliner adds extra relaxation, making it perfect for home theatres, lounges, or contemporary spaces. With sleek stitching and a spacious design, this durable and stylish piece is a must-have for retailers seeking high-end, functional furniture. Visit us at MITEC, Booth M407, for exclusive deals and customisation options!



ELK-DESA FURNITURE MARKETING

MITEC | HALL 7 | Booth M705
www.elk-desafurniture.com.my

EDBD5654(QB-5.0F)S285DC

Crafted from real American Walnut veneer, this modern contemporary bedroom set features exquisite parquet inlay patterns that add a touch of sophistication. What truly sets it apart is its floating effect, achieved through high-grade transparent acrylic legs, giving it a unique, airy aesthetic. Stylish, functional, and beautifully crafted, this set brings a luxurious yet modern touch to any bedroom.



SINHUIWAN FURNITURE

WTCKL | HALL 4B | Booth 4B12
www.sinhuiwanfurniture.com

MARICO BED

Elevate your bedroom with our solid rubberwood bed featuring a mixed cushion design. This bed combines durability, comfort, and timeless elegance. Thoughtfully crafted for modern living, it is the perfect choice for those who prioritise sustainability, quality, and style.



FUTURE MANUFACTURER

MITEC | HALL 6 | Booth M615
www.montesofa.com

ZENOS

Inspired by the precision of high-performance car seat design, Zenos presents a sophisticated 3-seater L-shaped sofa in Nimbus Grey. It features striking two-tone Thick Italian Leather by Gruppo Mastrotto, embodying elegance and refinement. The sofa's supportive headrest and neck rest ensure superior comfort, while its wider seat and minimalist handrest, accented with refined detailing, seamlessly blend style and functionality. Elevated by sleek Black Matte Metal legs and complemented by two plush armrest pillows, Zenos offers an unparalleled seating experience that combines luxury with exceptional comfort.



YEEGUAN FURNITURE MANUFACTURING

WTCKL | HALL 3 | Booth 318

www.yeeguan.com

LIVING ROOM SET / DINING SET

This elegant furniture set is crafted from solid rubberwood, ensuring durability and a timeless aesthetic. The backrests feature beautifully woven synthetic rattan, adding a touch of natural charm while maintaining strength and longevity. Designed for comfort, the seat cushions are embedded with pocket springs, providing excellent support and lasting resilience. The combination of warm wood tones, soft upholstery and intricate rattan details creates a sophisticated yet inviting atmosphere. Perfect for both modern and classic interiors, this set effortlessly enhances living and dining spaces with its stylish design and exceptional comfort. Ideal for those who appreciate quality craftsmanship and redefined aesthetics.



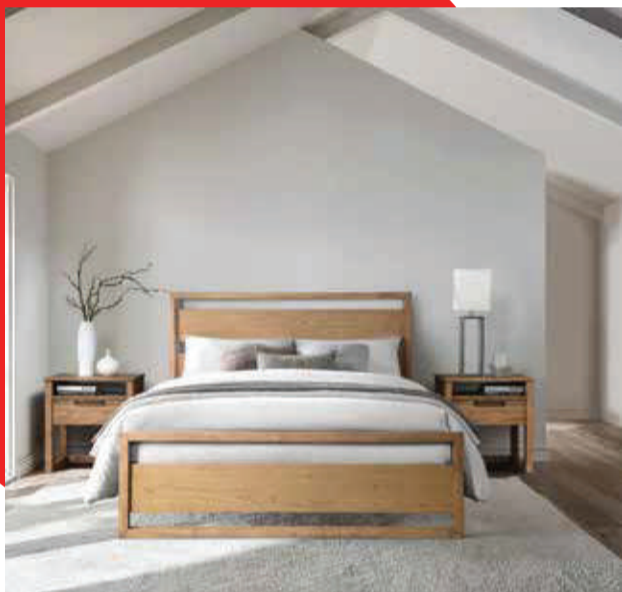
COMFYSEAT INDUSTRIES

WTCKL | HALL 2B | Booth 2B07

www.comfyseat.com.my

AUDITORIUM SEATS AND LECTURE SEATS

Designed for comfort and functionality, this auditorium or lecture seat is perfect for lecture halls, conference rooms, and theatres. Upholstered in a durable fabric with a soft cushioned seat and backrest, it ensures long-lasting support and comfort during extended seating periods. The foldable writing tablet provides a convenient workspace, making it ideal for note-taking, studying, or presentations. Sturdy wooden armrests add a touch of elegance, while the solid construction ensures stability and durability. A sleek and practical seating solution, this chair is designed to enhance any professional or educational environment.



SWEET HOME CONCEPT

MITEC | HALL 4 | Booth M408A

www.sweethome.my

OZZO BED, SIMSON BED, CYPLUS BED, JADE DRAWER BED

We design our furniture to complement each other in style and function. This year, we're focusing on large solid rubber wood poles, plush textures, and wavy designs for a luxurious yet cozy feel. Our collection includes functional, standard, trundle, and storage beds. Wood-upholstery combos are becoming customer favourites, including OEKO-Tex 100 certified options and improved wood finishes to highlight natural beauty. At Sweet Home, we prioritise comfort and quality in our bedroom furniture.



TOPGARD RESOURCES

MITEC | HALL 5 | Booth M513

www.topgradresources.com

BARRET

The Barret bed offers a timeless design with full upholstery, anchored by a striking feature headboard. Solid rubberwood bars and legs provide a sturdy foundation, while meticulous piping details accentuate the headboard's edges. The trendy, soft-textured fabric upholstery completes the elegant and inviting aesthetic of this classic piece.



WINMARK FURNITURE

MITEC | HALL 8 | Booth M802 & M813

DOMITILLA, EDEARDO, ITALO, LAINEY

The Domitilla dining table blends style and functionality with two side drawers and storage bins, maximising space without sacrificing aesthetics.

The Edeardo dining table features a striking antique grey and espresso finish, crafted from solid rubberwood and China Ash veneer MDF. Its modern design includes an extending leaf for versatile gatherings.

The Italo dining chairs combine style and practicality with high-performance fabric that resists spills and stains. They offer durability and comfort, perfect for modern dining.

The Lainey dining table showcases mid-century modern aesthetics with a unique slat-pedestal base. Made of solid rubberwood and MDF veneer, it is available in walnut or black finishes and seats up to four people, serving as a stylish centrepiece.



ECOMATE

WTCKL | HALL 3 | Booth 308

www.ecomate.com.my

CURVE SERIES

Curve is a stylish and modern furniture piece that combines aesthetics with functionality. Made from durable particle board and sturdy wooden legs, it's perfect for indoor use and fits seamlessly into any space. As a ready-to-assemble (RTA) furniture, Curve is a convenient choice for consumers. Constructed with eco-friendly materials, it offers space-saving, multifunctional solutions ideal for urban living.

MOK HIN FURNITURE

MITEC | HALL 3 | Booth M307A
www.mokhin.com

MH92533 + MH62577 (1800x900)

Transform your dining space with this stunning 7-piece farmhouse dining set, designed to bring warmth and character to any home. The sturdy trestle-style table features a natural woodgrain top paired with a bold black base, striking the perfect balance between rustic charm and contemporary sophistication. The set includes matching black slat-back chairs, offering comfortable seating and a classic design that complements various interior styles. Crafted for durability and everyday use, this dining set is perfect for family meals, entertaining guests, and creating lasting memories around the table.



KLOTZ INTERNATIONAL INDUSTRIES

MITEC | HALL 3 | Booth M316
contempous.com

CONTEMPO OLIVIA

The Olivia bed is a stunning piece for customers seeking the best in modern luxury. With its double-stacked, curving headboard that wraps around the sideboards, it creates a striking and harmonious silhouette. This bed combines comfort and contemporary elegance, making it a perfect choice for those wanting beauty, sophistication, and exceptional comfort in their bedroom.

WONDERFUL FURNITURE

WTCKL | HALL 4B | Booth 4B02A
www.wonderfulfurniture96.com

WF1012 | JACOB | Double Decker

Maximise space without compromising on style with this sleek and sturdy double-decker bed. Crafted from high-quality wood, it offers exceptional stability and durability, ensuring long-lasting comfort and safety. The sleek black finish adds a touch of modern elegance, seamlessly fitting into any bedroom decor. Ideal for kids, teens, or guest rooms, this space-saving bunk bed is perfect for creating a functional and cozy sleeping arrangement in any home.



WA CUSHION

MITEC | HALL 8
 Booth M802 & M813
www.wagroup.com.my

PAMELA

Upgrade your living space with this modern sectional sofa, designed for the perfect blend of relaxation and functionality. Whether you're enjoying movie nights, entertaining guests, or simply unwinding in style, this expertly crafted piece offers exceptional comfort and elegance, making it the perfect centerpiece for any home.

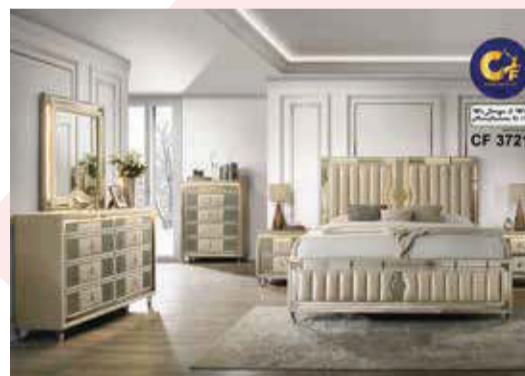


SOON HER SING INDUSTRIES

WTCKL | HALL 2B | Booth 2B08
www.acmi.net

ELMOND OFFICE SYSTEM

Designed for functionality and style, our office furniture collection enhances your workspace with high-quality German Melamine Laminated materials for durability and sophistication. From spacious desks and ergonomic workstations to functional meeting tables and versatile storage solutions, every piece is crafted to optimise organisation and productivity. With modern designs and meticulous craftsmanship, our furniture seamlessly blends professionalism, comfort, and elegance, creating an inspiring and efficient work environment.



CF FANTASTIC INDUSTRIES

MITEC | HALL 3 | Booth M322A
www.cffantastic.com

3721

The CF 3721 bedroom set blends contemporary elegance with luxurious comfort. Its meticulously designed bed frame features a plush, upholstered headboard and sleek wood panel accents. Integrated LED lighting creates a warm ambiance while highlighting the set's exquisite details. With a lustrous finish that adds sophistication, this complete set - including matching nightstands, a dresser, and a mirror - transforms your bedroom into a stylish retreat.



GAUSS SEATING

MITEC | HALL 10 | Booth M1002E
gausschair.com

PUBLIC SEATING

Gauss is a leading specialist in public seating, offering high-quality solutions for auditoriums, theatres, cinemas, concert halls, schools, stadiums, and various public spaces. With a strong commitment to innovation and internationalisation, Gauss continuously enhances its designs, fosters technical advancements, and ensures its products meet global standards. As Gauss continues to expand, it remains steadfast in its mission to deliver superior seating solutions for the modern world.

ZHIN SHENG FURNITURE

WTCKL | HALL 4B | Booth 4B01
www.zhinsheng.com.my

AUGUST SET

Enjoy the luxurious look of marble with the durability of engineered materials. Our marble-finished collection combines sophistication and affordability, offering a sleek, high-end aesthetic without the weight or cost of real stone. Designed for longevity, each piece features a scratch- and moisture-resistant laminated marble veneer on a sturdy particle board core. Thoughtfully crafted by our designers, this collection effortlessly blends timeless elegance, functionality, and value, bringing refined beauty to any space.

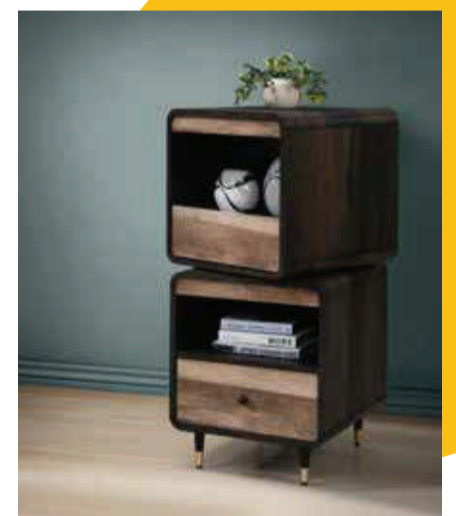


VISTAWOOD INDUSTRIES

MITEC | HALL 7 | Booth M721
www.vistawood.com

JAVION BABY FURNITURE SET

Javion is a thoughtfully designed baby furniture collection that seamlessly transitions from infancy to childhood. Crafted from durable rubberwood, it offers lasting strength, warmth, and a nurturing space for your little one. The versatile baby cot transforms into a toddler bed, adapting effortlessly to their growing needs. Complemented by a nightstand, chest, and wardrobe, the collection provides ample storage and functionality. With its timeless design and sturdy construction, Javion is more than just furniture - it's a long-term investment in comfort, style, and practicality, supporting your child through every stage.



BYK GLOBAL

WTCKL | HALL 2C | Booth 2C07
www.bykglobal.com

MODERA KITCHEN SERIES

Transform your kitchen with our modern cabinet set! Designed for both style and functionality, these easy-to-assemble cabinets fit compact spaces and offer ample storage for spices, utensils, and dinnerware, keeping everything organised. Their contemporary design adds elegance to any decor, and they are crafted from quality materials to ensure durability. Experience the perfect blend of quality and convenience with our premium kitchen cabinet set, and elevate your cooking space today!

CHONGQING JABO PVC LAMINATES INDUSTRIAL

MITEC | HALL 9 | Booth M915F
www.jabopvc.com

DECORATION PVC FILM FOR DOOR, FURNITURE AND WALL PANEL USE

Established in 2012, Chongqing JABO brings over 12 years of expertise in PVC decorative films for doors, walls, and cabinets. With a strong presence in Central Asia, Southeast Asia, Russia, and beyond, the company is committed to delivering high-quality, versatile surface solutions for various applications.

VS IDEA FURNITURE

MITEC | HALL 7 | Booth M710
www.vsideafurniture.com.my

ECOTURN

EcoTurn combines functionality and aesthetics with its 360-degree rotating double-layer design. The central axis rotation system allows effortless switching between display surfaces, enhancing interactivity. A hidden ball-bearing mechanism ensures smooth, silent movement while a reinforced bottom bracket provides stability. The open upper compartment is perfect for showcasing books or artwork, while the lower section offers versatile storage for items of various sizes. Stylish and practical, EcoTurn is the perfect blend of elegance and efficiency.

SEE YOU AT

SOUTHEAST ASIA'S
 LARGEST FURNITURE
 TRADE SHOW



4-7 MARCH

MITEC & WTCKL KUALA LUMPUR

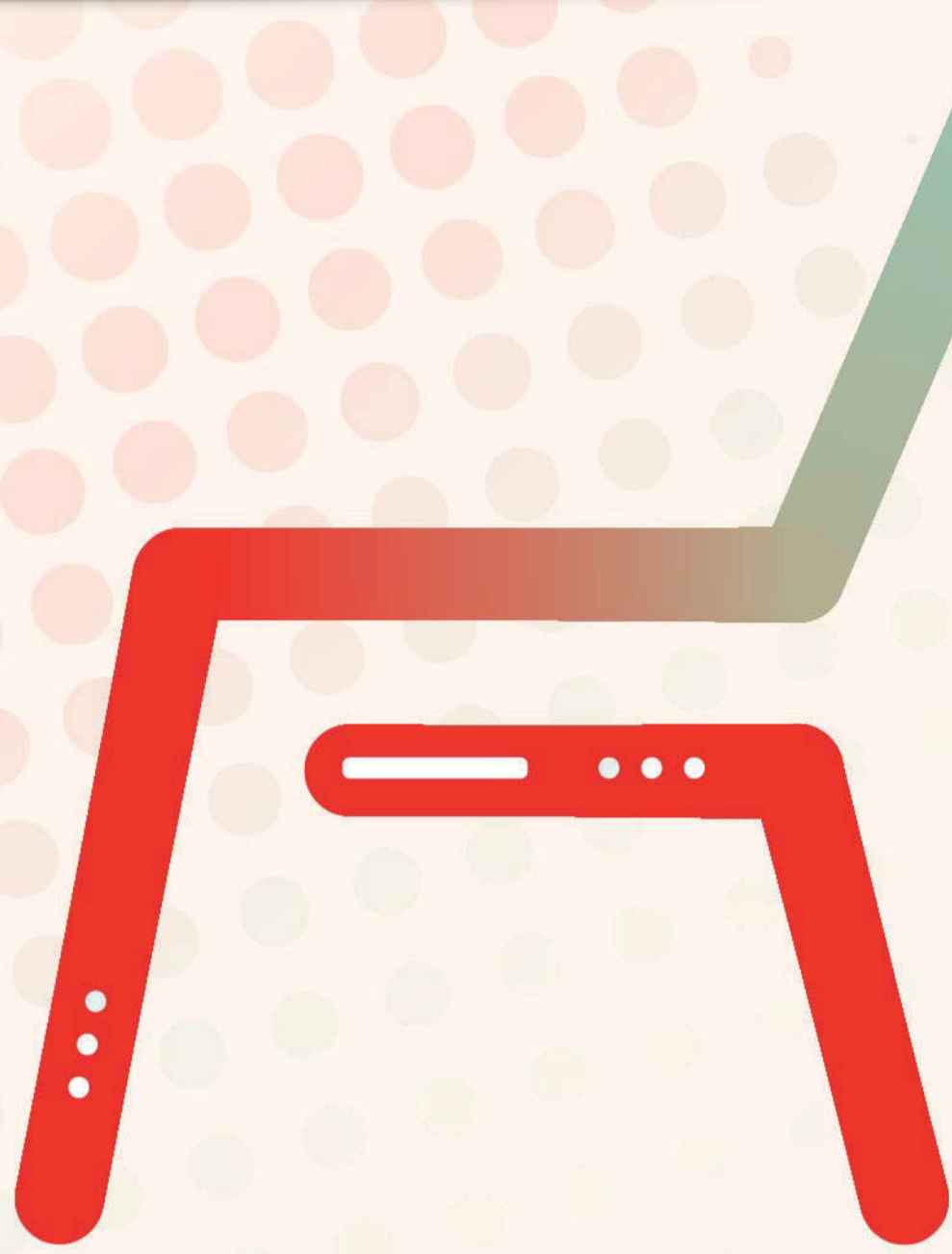
Organiser:



Strategic Partner:



www.miff.com.my



TRANSPORTATION

Daily Morning Hotel Transfer

Time: 0915 hrs – 0930 hrs (1-4 March)

Daily Evening Hotel Transfer

Time: 1815 hrs – 1830 hrs (1-3 March)
 1715 hrs – 1730 hrs (4 March)

MITEC & WTCKL to Official Hotels

- Dorsett Hartamas Kuala Lumpur
- Seri Pacific Hotel Kuala Lumpur
- Sheraton Imperial Kuala Lumpur
- Sofitel Kuala Lumpur Damansara
- Shangri-La Hotel Kuala Lumpur
- Sunway Putra Hotel Kuala Lumpur
- Wedgewood Residences

Shuttle Transfer WTCKL ↔ MITEC

Time: 0930hrs – 1800hrs (1-3 March 2025) , 0930hrs – 1700hrs (4 March 2025)

Pick Up Point

WTCKL Main Entrance, Level 2 (Bus Bay)
MITEC South Entrance, Level 1



Taxi Stand

WTCKL Main Entrance, Level 2
MITEC Level 1 – South Entrance



Organiser:



Informa Markets Malaysia Sdn Bhd
 Company no. 201101014009

Suite 5-01, Level 5, Sunway VISIO Tower,
 Lingkaran SV, Sunway Velocity,
 55100 Kuala Lumpur, Malaysia.

+603-9771 2688
 +603-9771 2799
 info@miff.com.my

Strategic Partner:



Supported by:



Endorsed by:



Media Partner:



Official Directory:



Official Magazine:

