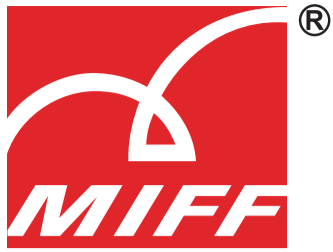


**MALAYSIAN  
INTERNATIONAL**



**FURNITURE  
FAIR 2025**



# furnis now

The Official Show News of the  
Malaysian International Furniture Fair



1-3 March  
9:30am - 6.00pm

4 March  
9:30am - 5.00pm



MITEC & WTCKL,  
Malaysia

Issue **3**  
March

## Strengthening Bonds, *Celebrating Friendships*

The furniture industry's most celebrated social event transforms business connections into lasting relationships

The MIFF Buyers' Night is the social highlight of the furniture industry, where handshakes turn into friendships, conversations spark new collaborations, and the industry's best come together to unwind, connect, and celebrate the power of partnership. This year was no exception!

MIFF Buyers' Night 2025 was a resounding success, bringing together over 700 guests from 80 countries and regions at the Grand Ballroom of MITEC. With participants from Europe, Asia, the Americas, and beyond, the event proved once again that while business fuels the industry, it's the friendships and collaborations that truly make it thrive.

Ms. Kelie Lim, General Manager of MIFF, set the tone for the night with a warm welcome to our international buyers. "Your choice to make MIFF your preferred sourcing destination in Asia transforms this exhibition into a dynamic marketplace of ideas, innovation, and opportunity."

As global supply chains continue to stabilise post-pandemic, this night wasn't just a party – it was a well-earned breather, where industry challenges took a backseat to good food, great music, captivating performances, and even better conversations.

From the moment guests stepped into the venue, there was an unmistakable energy in the air. Buyers from across the world found themselves swapping stories (and maybe a few dance moves) with manufacturers, designers, and suppliers who share their vision.

This year's event featured an exciting lineup of entertainment, delicious international cuisine infused with local flavours, and thrilling lucky draws. Attendees savoured a brand-new menu curated by award-winning chefs, highlighting the best of Malaysian culinary traditions. The evening's highlight was the specialty dessert: Baked Cempedak Cheesecake with Berries and Drizzled Gula Apong.

As the night progressed, business contacts were exchanged amidst bites of exquisite cuisine, and networking took on a new rhythm with a spirited dance performance featuring the hit song APT by Rosé & Bruno Mars. Just when guests thought it couldn't get any better, tenor Adam Matin's soulful performance created the perfect atmosphere for meaningful conversations.

MIFF Buyers' Night showcased the strength of unity in an ever-evolving industry. While individual businesses may encounter challenges, collectively, the industry can create new pathways, explore emerging markets, and transform obstacles into opportunities.

As the evening drew to a close, a palpable sense of optimism filled the room. In the world of furniture, success isn't just about great products; it's about great partnerships. With each conversation and shared vision, attendees were reminded that together, they can overcome challenges and seize new opportunities.

We wish all our buyers a productive and successful experience as they explore new furniture designs and business opportunities during the final two days of MIFF 2025.



## MIFF 2025 Awards Ceremony CELEBRATE EXCELLENCE, WITNESS INNOVATION

Time: 2:30pm

Venue: The Gallery, Level 1A, MITEC

The stage is set, and the anticipation is high: Who will claim the top honours at the MIFF 2025 Awards Ceremony? Join us for an electrifying celebration of design, innovation, and excellence as we crown this year's industry trailblazers. Don't just hear about it – experience the moment live!

GUEST OF HONOUR

**YBhg. Dato' Razali bin Mohammad**  
Deputy Secretary General (Plantation & Commodities)  
Ministry of Plantation and Commodities

## GET MORE AT MIFF 2025 WITH MIFF FURNIVERSE 2.0

Enhanced, Faster, Smarter!



Explore the full event directory of exhibitors, speakers, and products



Find your way seamlessly using the interactive floor plan



Register for informative talk sessions, gaining access to valuable industry insights



**MIFF** furniverse

Visit [www.miffurniverse.com](http://www.miffurniverse.com)  
or scan the QR code





Insights from MIFF 2025 Industry Seminar Series

**SHAPING THE FUTURE OF FURNITURE:  
 SUSTAINABILITY & DESIGN**

The furniture industry is undergoing a transformative shift driven by sustainability concerns and evolving design trends. As businesses face increasing environmental scrutiny and changing consumer expectations, staying ahead of these trends is vital. Two engaging sessions at MIFF 2025 explored key aspects shaping the industry's future: sustainability in manufacturing and the cultural influences on modern furniture design.



**TURNING THE TIDE ON  
 CARBON EMISSIONS**

With sustainability at the forefront, understanding and measuring carbon footprints is essential. In the session titled **"Making Carbon Footprint Count for You,"** Professor Dr. Jegatheswaran Ratnasingam from Universiti Putra Malaysia shared valuable insights on carbon footprints in the wood products and furniture sector. His research provided key data on specific furniture products and simplified techniques for manufacturers to evaluate their carbon emissions.

Professor Ratnasingam stressed the urgent need for industries, especially manufacturing, to adopt low-carbon practices. He introduced Life Cycle Assessment (LCA) as an effective method for assessing environmental impacts from raw material extraction to disposal. By identifying the most significant stages in production, companies can make informed decisions to reduce their carbon footprints. He passionately advocated for using wood as a sustainable material, highlighting its natural ability to store carbon, making it an ideal choice for furniture manufacturing.

The seminar concluded on a positive note, encouraging manufacturers to embrace sustainable practices and meet the growing demand for transparency in carbon emissions.

**WEAVING CULTURAL NARRATIVES  
 INTO DESIGN**

A lively panel discussion titled **"Trends of Furniture in Interior Design Today"** showcased how local cultural heritage inspires innovative furniture design. Experts from Japan, Vietnam, the Philippines, Singapore, and India engaged in a vibrant dialogue exploring the cultural currents reshaping contemporary furniture.

Ar. Sarosh Wadia highlighted the fusion of indigenous craftsmanship with modern minimalism in Indian design. IDr. Maria Victoria S. Almario discussed the blend of traditional and contemporary aesthetics. Koji Sakai shared insights into Japanese design's serene minimalism, while Luu Viet Thang urged designers to elevate Vietnam's rich heritage. Keat Ong addressed multicultural influences and affordability challenges.

The panellists agreed that the future of furniture design lies in harmonising traditional elements with modern techniques and embracing cultural identities.



**Don't miss out on the opportunity to engage with industry leaders and explore new ideas!**

**Join us for the upcoming sessions in the Industry Seminar Series to shape the future of your business in the furniture sector!**



**Exhibitor**

**Jimmy Lew**

T.A. Furniture & Projects  
 Malaysia

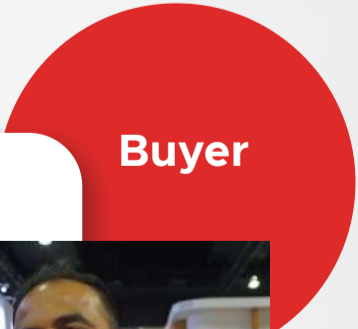
We are overwhelmed with the response at MIFF. We came across many new faces, and our existing buyers were also here to place orders. MIFF provides us with an excellent platform to mingle with our buyers while also allowing us to connect with new customers we can build relationships with.

**TESTIMONIALS**

**Dinesh Abeykoon**

Diamond Creek Furniture  
 Australia

We found several suppliers at MIFF. With so many suppliers and an incredible variety of products, this is one of the best exhibitions to visit. We will definitely continue visiting MIFF every year to source new products.



**Buyer**



Ufi Approved International Event  
**MIFF** MALAYSIAN INTERNATIONAL FURNITURE FAIR 2025

# MIFF AWARDS CEREMONY

3 MARCH 2025 | Malaysia International Trade and Exhibition Centre

- MIFF 2025 Best Presentation Award
- MIFF 2025 Furniture Excellence Award
- MIFF Furniture Design Competition 2025

**The unveiling of winners at MIFF 2025 Award Ceremony. Join us!**



# INDUSTRY SEMINARS

@The Gallery, Level 1A, MITEC

**3 March (Monday)**

**11:00am – 11:45am**

**AI Friend or Enemy?**

**Dr Eric Leong (Moderator)**  
 Malaysia

**Tul Lekutai**  
 Deco Moda Studio  
 Thailand

**Walter Tan**  
 Elemental Republic  
 Malaysia

**Hamidah Abdullah**  
 CTCS Worldwide Sdn Bhd  
 Malaysia

**Philip Yap**  
 CDN-Worldwide Limited  
 China/Malaysia

**Shinichi Mitsuki**  
 Mitsui Designtec Co Ltd  
 Japan

**11:45am – 12:30pm**

**Ensuring Global Market Readiness - FRIM's Role in R&D, Testing and Certification for Malaysian Furniture Industry**

**Dr Sharmiza Adnan**  
 Forest Research Institute Malaysia (FRIM)  
 Malaysia

xORDINARY

You're invited

xOrdinary 4th edition

mitec hall 5 foyer  
**01-04 march**

0930 - 1800 (1<sup>st</sup> - 3<sup>rd</sup>)  
 0930 - 1700 (4<sup>th</sup>)

Website: [www.xordinary.com.my](http://www.xordinary.com.my)

- Dad's Woods
- The Craftsmanty
- NatureLoop x Bhatrisyee Raeeedah
- Charmaine Kamal | Nurtureknots Studio
- Shi Terrazzo Atelier
- Shahril Faisal
- Klaesit
- Kurita by Seanlon x Simply Ant Fixtures
- Merite Design x Manje

- Dayang's Art
- Myjong
- Soul in Glaze by Leezy
- .bungkus
- Petals by You
- Dura Ki Hana
- Cynthia Ngeau | Fego
- Stephanie Ng Design
- An Art Think

- Lim Yang Hock | Double Wood Design
- Abee Chan Jia Er | APU x Cablerod
- Lee Jia Hui | APU x Cablerod
- Ng Kah Zun | APU x Cablerod
- Teh Yi Hong | APU x Cablerod
- Liew Yong Kian
- 0.25sec
- Musotrees
- Triple Tree



# MIFF Furniture Design Competition (FDC) Finalists Showcase

1-4 March | Hall 2 Foyer, MITEC

In conjunction with Malaysian International Furniture Fair 2025 1 - 4 March

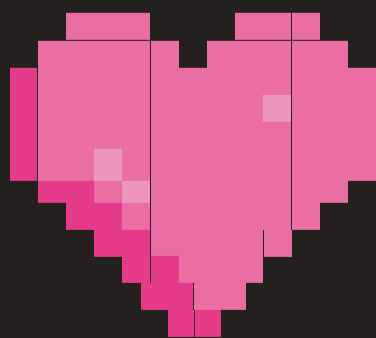


**id MY FAVOURITE**  
 iNternational Design Award

# AWARD CEREMONY

An evening of inspiration, recognition, and networking with top designers and industry leaders.

**03.03.2025**  
**6 PM**  
**WTC PACIFIC BALLROOM**



i  
D  
W

**KUALA LUMPUR**

# iDESIGN WEEK

展位号 M500A

KUALA LUMPUR  
**iDESIGN WEEK**  
 当代设计周

**2025 3.01-04**

MALAYSIA INTERNATIONAL TRADE & EXHIBITION CENTRE  
 MITEC 马来西亚吉隆坡国际会展中心



**KER GLOBAL FURNITURE**

MITEC | HALL 2 | Booth M204A

[www.kerfurniture.com](http://www.kerfurniture.com)

**WOODEN FURNITURE**

At MIFF, we're unveiling a bold new chapter with our brand renewal - "New Materials, New Functions, New Series." Be among the first to experience our latest dining and living room collections, where innovation meets elegance. From cutting-edge sofas to statement-making tables, chairs, and cabinets, every piece is designed to redefine modern living. Don't miss this exclusive showcase!

**TKY FURNITURE INDUSTRIES**

WTCKL | HALL 3 | Booth 317

[www.tkyfurniture.com](http://www.tkyfurniture.com)

**WESLEY 1+8 DINING SET**

We specialise in crafting high-quality wood furniture that brings timeless elegance, sustainability, and lasting comfort to your home. Introducing the Wesley 1+8 Dining Set - a perfect harmony of style and durability, designed for memorable gatherings. Expertly crafted from premium wood, this stunning set features a spacious table and eight finely constructed chairs, offering both sophistication and comfort. Elevate every meal with the Wesley Dining Set - where quality, craftsmanship, and elegance come together seamlessly.



**YANG GUANG FURNITURE**

WTCKL | HALL 3 | Booth 325A

[www.yangguangfurniture.com](http://www.yangguangfurniture.com)

**DINING SET, WALL MIRROR+DINING CABINET, HALL CABINET & COFFEE TABLE**

Yang Guang Furniture offers a diverse range of products designed to meet the needs of the modern era, seamlessly managing the journey from production to customer presentation. Our ergonomic chairs and spacious tables comfortably seat six to eight, making them perfect for both intimate gatherings and grand celebrations. Featuring a stylish combination of laminated tabletops, sturdy metal legs, and vibrant colours, our furniture adds a contemporary touch - making them ideal for both homes and showrooms.



**ROYCE ENTERPRISE**

MITEC | HALL 10 | Booth M1012E

[www.royce-enterprise.com](http://www.royce-enterprise.com)

**RTA FURNITURE**

Transform your home with our versatile RTA furniture collection. From stylish living room solutions and functional home office setups to playful kids' furniture, space-saving bed cabinets, and practical bathroom storage, we offer everything you need to furnish your entire home with ease and affordability.

**FOSHAN SHENGHEFENG FURNITURE**

MITEC | HALL 1 | Booth M110F

[fssenqi.en.alibaba.com](http://fssenqi.en.alibaba.com)

**FUNCTIONAL CHAIRS, SOFA WOOD LEG, SOFA METAL LEG**

Indulge in the luxurious comfort of our sofa cum rest chairs. Each chair is meticulously crafted, featuring supple leather or premium fabric paired with a sculpted wooden frame and reclining support, creating a design that leads the industry in both elegance and relaxation.

**LJ FURNITURE**

MITEC | HALL 11 | Booth M1113

**SUNSHINE L-SHAPE (INCLINER, CP)**

Experience the ultimate in comfort and sophistication with the Sunshine L-Shape (Incliner) (P) Sofa. Upholstered in premium white leather, this luxurious L-shaped recliner is designed for pure relaxation, featuring plush segmented cushions, a smooth reclining mechanism controlled at your fingertips, and sleek metal legs for a modern touch. Transform your living space with the Sunshine L-Shape (Incliner) (P) sofa and discover the true meaning of relaxation.



**JETEXIM BUSINESS**  
**MITEC | HALL 4 | Booth M426**

[www.glory4ever.com](http://www.glory4ever.com)

**J4-56BEDROOM SET**

Featuring a sleek glossy black UV board accented with gold acrylic details and elegant handles, this modern bedroom set exudes contemporary luxury. The crystal white padded headboard, complemented by built-in LED lighting, adds a touch of refinement while creating a warm, ambient glow. Designed for both style and sustainability, this exquisite collection is crafted with eco-friendly materials, making it the perfect choice for those who value both elegance and responsible living.

**S & U INDUSTRIES**

**WTCKL | HALL 2B | Booth 2B18**  
[www.s-inds.com](http://www.s-inds.com)

**SU 934M- 3 DOORS WARDROBE WITH MIRROR**

"Upgrade your space with this sleek and spacious 3-door wardrobe, designed for both elegance and practicality. Offering ample storage for clothing, accessories, and more, it keeps your essentials neatly organised. A standout feature is the full-length mirror on one door - perfect for outfit checks while adding a touch of sophistication to your room. With its clean lines and contemporary finish, this wardrobe effortlessly complements any bedroom or dressing area, blending timeless style with everyday convenience.

One of the doors is equipped with a full-length mirror, perfect for checking your outfit or adding a touch of sophistication to your space.

The wardrobe's clean lines and contemporary finish make it a versatile addition to any bedroom or dressing area, combining practicality with an aesthetic appeal."



**LANGFANG**  
**JINNAIDA TRADING**

**MITEC | HALL 11 | Booth M1107C**  
[www.naidafurniture.com](http://www.naidafurniture.com)

**DINING CHAIR**

At Langfang Jinnaida Trading, we craft high-quality dining chairs that blend elegance, durability, and comfort. Made from premium materials, our diverse range of styles enhances any dining space, whether for home or commercial use. Our chairs offer the perfect balance of sophistication and functionality, elevating every dining experience.



**ALIAN FURNITURE INDUSTRIES**

**MITEC | HALL 2 | Booth M202 & M203**  
[www.alianfurniture.com](http://www.alianfurniture.com)

**BEDROOM SET & LIVING ROOM SET & KITCHEN CABINET & UPHOLSTERED BED FRAME**

Discover our versatile knock-down furniture, designed for modern homes and workspaces. From bedroom sets and upholstered bed frames to TV cabinets, bookshelves, and office tables, each piece offers style, functionality, and durability. Crafted from quality materials with sleek finishes, our furniture enhances any space with practical storage and contemporary design.



**3 DAY'S FURNITURE**

**MITEC | HALL 3 | Booth M308**  
[www.3daysfurniture.com](http://www.3daysfurniture.com)

**TIARA DINING SET**

Enhance your dining space with this exquisite double pedestal dining table, featuring a refined antique-inspired finish that exudes timeless charm. The sleek faux marble surface captures the beauty of natural stone while offering durability and easy maintenance, making it perfect for everyday use. Designed to accommodate up to eight dining chairs, this table is ideal for both intimate gatherings and grand celebrations.



**MAXLY LANDSCAPE**

**MITEC | HALL 1 | Booth M118A**  
[maxly.decatcms.com.my](http://maxly.decatcms.com.my)

**WATER FEATURES FIBER GLASS**

Our portable fiberglass water features are expertly designed for beauty and durability. Each piece undergoes rigorous testing and comprehensive design phases by our Research & Development Department, ensuring top quality. Built to withstand harsh climates and the test of time, our water features offer a lasting, elegant touch to any indoor or outdoor setting.



**FOSHAN KADIT HARDWARE**

MITEC | HALL 1 | Booth M115C  
kadit.en.alibaba.com

**CABINET HANDLES/ CABINET LED LIGHT**

Upgrade your furniture with our high-quality cabinet handles and LED cabinet lights, designed for both functionality and style. We offer a variety of modern and recessed handles, available in multiple finishes to suit any interior. With top-quality materials, fashionable designs, customisable sizes, and exceptional durability, our accessories provide the perfect finishing touch to any space.



**HOME BEST ENTERPRISE CORPORATION**

MITEC | HALL 6 | Booth M611  
homebest.com

**JORIS**

Elevate your living space with the Joris Coffee Table Set, a perfect blend of modern elegance and functionality. Featuring striking veining patterns and bold black-and-white contrast, the high-quality marble surfaces offer a sleek, polished look with lasting durability. Supported by a sturdy veneer base, this set ensures stability and sophistication, seamlessly complementing contemporary interiors. A statement piece that combines style, function, and quality, the Joris Coffee Table Set is the perfect addition to any modern home.



**DOMICA FURNITURE INDUSTRIES**

WTCKL | HALL 4B | Booth 4B13A  
www.domica.com

**WOODEN/METAL DOUBLE DECKER BED FRAME**

Designed for both durability and aesthetics, this double-decker bed frame features a unique combination of wooden posts and a sturdy metal frame. Its knock-down design minimises CBM per set while maximising container load efficiency. Available in a variety of wood and metal colour options, this versatile bed frame complements any space. Contact us for more details!



**FOSHAN SUILONG FURNITURE**

MITEC | HALL 11 | Booth M1119B  
www.suilong.com

**MATTRESS**

The Suilong Mattress is engineered with advanced comfort technology, providing exceptional support and pressure relief for a truly restful night's sleep. Its unique, breathable material ensures a cool sleep environment, ideal for hot climates. With a firm yet cushioned feel, this mattress adapts to your body's contours, promoting optimal spinal alignment and minimising tossing and turning. Designed for all sleep positions, the Suilong Mattress promises durability and long-lasting comfort.



**CMI IMPORT & EXPORT**

WTCKL | HALL 2B | Booth 2B12  
www.eon-home.com

**MATTRESS**

Experience ultimate comfort with our premium mattress collections, designed to suit every need. From luxury pocket spring mattresses with memory foam and cooling fabrics to high-density Smart Comfort Foam for pressure relief, we offer superior support. Our Hybrid Comfort Line blends springs and foam, while budget-friendly essentials provide quality at an affordable price.



**FURNIMEG MANUFACTURING**

MITEC | HALL 1 | Booth M102  
www.furnimeg.com

**BLACK GOLD LIVING ROOM SERIES**

Elevate your home with Furnimeg's sophisticated modern furniture, designed to blend luxury with functionality. Featuring sleek black finishes and striking gold accents, our pieces exude elegance and style. The minimalist yet practical TV console and dresser offer ample storage, making them the perfect addition to any contemporary living space.



**TECHCENTIAL**

**MITEC | HALL 2 | Booth M219**  
[www.techcentral.com](http://www.techcentral.com)

**BEDROOM FURNITURE**

Discover our newest collection of low-formaldehyde, high-protection finished wood furniture, designed to combine natural wood grain textures with sleek, modern elegance. Featuring a 5-piece bedroom set and stylish occasional pieces like coffee tables, end tables, and TV stands, each piece is crafted for both beauty and functionality. Our KD series ensures effortless assembly in just 15 minutes, making it the perfect choice for contemporary living.



**CT HENG FURNITURE**

**MITEC | HALL 3 | Booth M315B**  
[www.ctheng.com](http://www.ctheng.com)

**NOAH BUNK BED**

The Noah Bunk Bed blends functionality and elegance, crafted from durable wood for a sturdy, long-lasting sleeping solution. Featuring a spacious Queen-size lower bed for adults or couples and a cozy Single-size upper bed for children or guests, it's perfect for families. Two built-in storage drawers provide convenient space for bedding, clothes, or toys, keeping rooms tidy. With its timeless design and solid construction, the Noah Bunk Bed ensures both comfort and durability, making it a stylish, practical choice for any home.



**GOLDEN TECH FURNITURE INDUSTRIES**

**WTCKL | HALL 3 | Booth 326**  
[www.goldentechfurniture.com](http://www.goldentechfurniture.com)

**DINING SET, OCCASIONAL SET, NESTING TABLE, BED**

Our furniture is crafted to elevate your home experience, combining style, comfort, and functionality. From minimalist to luxurious designs, each piece features ergonomic heights and curved backs, ensuring maximum comfort while maintaining a sleek, modern aesthetic. Perfect for any space, our collection blends elegance with everyday practicality.



**SYNERGY WOOD PRODUCTS**

**MITEC | HALL 6 | Booth M612**  
[www.synergywood.com.my](http://www.synergywood.com.my)

**LIBERTY**

The Liberty Dining Set showcases a unique round table with a sculptural intersecting base and a warm light wood finish, paired with four curved backrest chairs upholstered in dark fabric for an elegant contrast.



**MF INTERNATIONAL**

**MITEC | HALL 4 | Booth M428**  
[www.cffantastic.com](http://www.cffantastic.com)

**MF 2536, MF2599 & MF P AVA**

Enhance your home with our expertly crafted furniture, designed to suit every style - from traditional and vintage to modern aesthetics. As a trusted home furniture manufacturer, we create pieces that complement your taste and needs. Discover our comfortable and stylish bedroom sets, perfect for a long and restful sleep.

**SF FURNITURE**

**MITEC | HALL 2 | Booth M216**  
[www.sffurn.com](http://www.sffurn.com)

**DINING SET**

Founded in 2004, SF Furniture specialises in crafting high-quality dining sets for homes, cafes, and restaurants. With a commitment to exquisite craftsmanship and stylish design, we create furniture that blends comfort and elegance, enhancing every space. Trust SF Furniture to deliver functionality and aesthetic appeal to your dining experience.



**AODA DYNAMIC (M)**  
MITEC | HALL 1 | Booth M100A  
[www.artissofa.com](http://www.artissofa.com)

**LAWRENCE ELECTRIC RECLINER SOFA**

The LAWRENCE electric recliner sofa combines state-of-the-art design with unmatched comfort. Featuring a zero-wall and zero-gravity mechanism, it fully reclines without needing extra space, making it perfect for compact and modern interiors. With its sleek aesthetic and advanced ergonomic support, LAWRENCE redefines relaxation. Experience our next-level innovation at MIFF 2025.



**HELMSMAN QUALITY & TECHNOLOGY SERVICES**

MITEC | HALL 1 | Booth M110A  
[www.hqts.com](http://www.hqts.com)

**3RD PARTY QUALITY CONTROL COMPANY**

With over 30 years of experience, HQTS is a leading third-party quality control provider, operating in 80+ countries with 40 offices worldwide. We specialise in serving furniture companies globally, ensuring strict quality standards for their finished and semi-finished imports from Asia. Partner with HQTS for reliable and professional QC solutions.



**BZ FURNITURE**  
MITEC | HALL 6 | Booth M615A

**B617**

This bedroom set combines classic design with modern functionality. Built with solid wood and mindi veneer, the two-tone antique brown and "sandthru buttermilk" finish creates a warm and inviting atmosphere. Benefit from durable English dovetail drawers with smooth metal glides, and luxurious velvet-lined top drawers. The nightstand's built-in UV light and USB port provide modern convenience. The EEVEL mirror enhances the set's style, and the bed, dresser, and chest offer generous storage to keep your space organised.



**S.B. FURNITURE INDUSTRY**

MITEC | HALL 11 | Booth M1101A  
[www.sbdesignsquare.com](http://www.sbdesignsquare.com)

**QUINN AND LAVIQUE COLLECTIONS**

Experience the Quinn and Lavique Collections, crafted with innovative soft-pouch PVC material and advanced membrane technology for unmatched comfort and functionality. Featuring a finger scan system and a USB charger, these collections seamlessly blend cutting-edge technology with exceptional design. Visit our booth to explore the unique textures and thoughtful details that set them apart.



**HEAP HENG LEONG**  
MITEC | HALL 6 | Booth M607  
[www.hhlsb.com](http://www.hhlsb.com)

**TERRA ULTIMATE GUARD FABRIC**

The TERRA collection combines rich greys and warm browns to create a sophisticated yet inviting look. Designed to complement earthy tones, it effortlessly enhances any space with a modern, cozy aesthetic. Inspired by nature, TERRA adds warmth and elegance, making any room feel both stylish and welcoming.



**LUMI LEGEND CORPORATION**

MITEC | HALL 9 | Booth M908B  
[www.lumi.cn](http://www.lumi.cn)

**HERCULES HEAVY-DUTY GAS SPRING MONITOR ARM**

Unleash the full potential of your workstation with the Hercules Heavy-Duty Gas Spring Monitor Arm. Engineered for unparalleled stability and effortless adjustability, this arm securely supports even the largest monitors, freeing up valuable desk space. The robust gas spring mechanism allows for smooth, fingertip adjustments, ensuring optimal ergonomic positioning throughout your workday.

# Admission Rules

- Opening hours: **9:30am - 6:00pm\***  
 \*4 March opening hours: 9:30am - 5:00pm
- Admission fee: **RM20\*\***  
 \*\*Admission fee is subject to 8% SST
- No admission to person(s) **under the age of 16**
- Dress code is **smart casual**



**Join MIFF Community**

**Subscribe MIFF E-Newsletter**



Furnish Now by MIFF



Furnish Now by MIFF



Furnish Now by MIFF



MIFF Official

[www.miff.com.my](http://www.miff.com.my)

## TRANSPORTATION

### Daily Morning Hotel Transfer

Time: 0915 hrs – 0930 hrs (1-4 March)

### Daily Evening Hotel Transfer

Time: 1815 hrs – 1830 hrs (1-3 March)  
 1715 hrs – 1730 hrs (4 March)

### MITEC & WTCKL to Official Hotels

- Dorsett Hartamas Kuala Lumpur
- Seri Pacific Hotel Kuala Lumpur
- Sheraton Imperial Kuala Lumpur
- Sofitel Kuala Lumpur Damansara
- Shangri-La Hotel Kuala Lumpur
- Sunway Putra Hotel Kuala Lumpur
- Wedgewood Residences

### Shuttle Transfer WTCKL ↔ MITEC

Time: 0930hrs – 1800hrs (1-3 March 2025) , 0930hrs – 1700hrs (4 March 2025)

#### Pick Up Point

**WTCKL** Main Entrance, Level 2 (Bus Bay)  
**MITEC** South Entrance, Level 1



#### Taxi Stand

**WTCKL** Main Entrance, Level 2  
**MITEC** Level 1 – South Entrance

